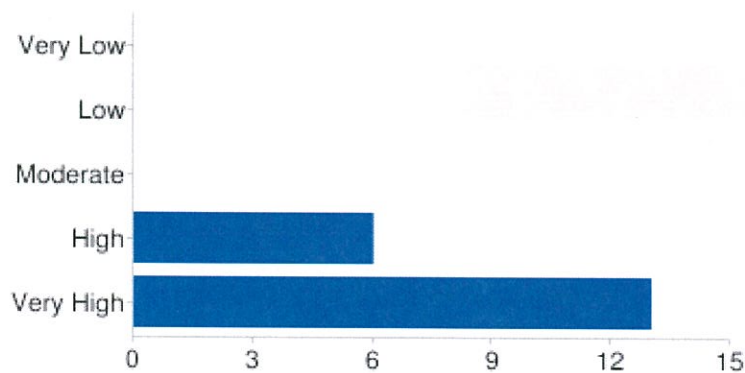


# 19 responses

[View all responses](#)

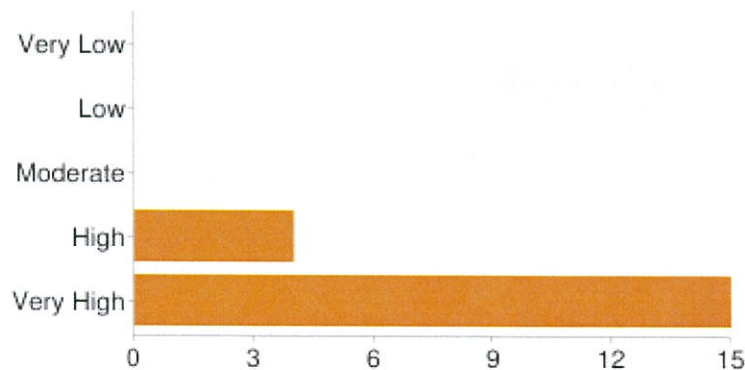
## Summary

**The relevance of information to your needs? [How would you rate your satisfaction?]**



Very Low	0	0%
Low	0	0%
Moderate	0	0%
High	6	31.6%
Very High	13	68.4%

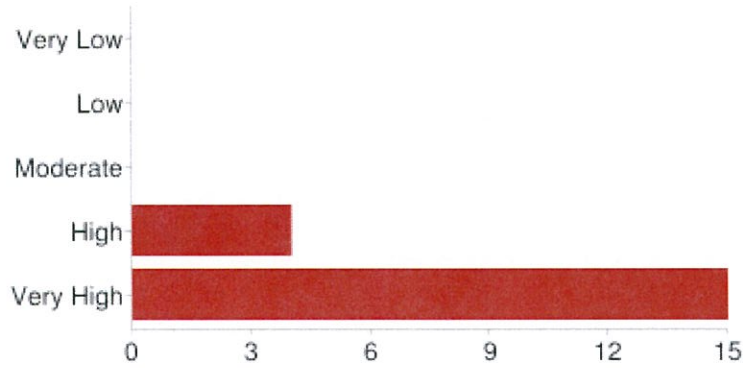
**Presentation Quality of instructors? [How would you rate your satisfaction?]**



Very Low	0	0%
Low	0	0%

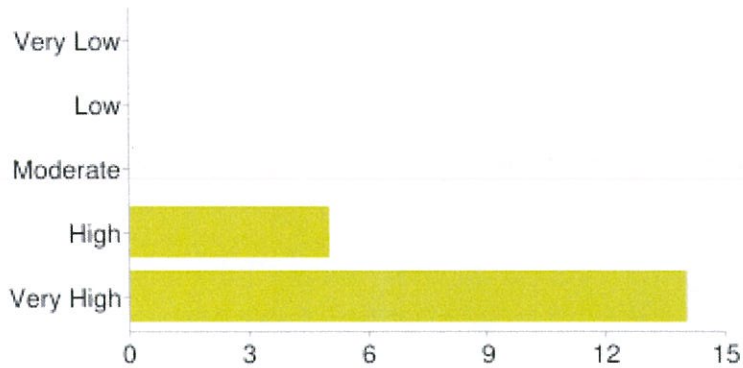
Moderate	0	0%
High	4	21.1%
Very High	15	78.9%

**Subject matter knowledge of instructors? [How would you rate your satisfaction?]**

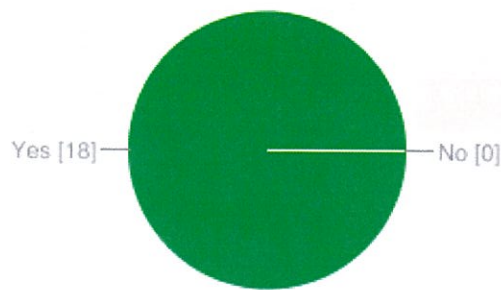


Very Low	0	0%
Low	0	0%
Moderate	0	0%
High	4	21.1%
Very High	15	78.9%

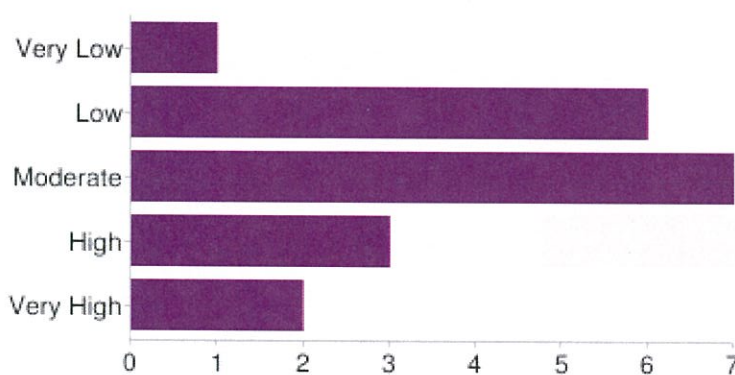
**The over all quality of the session? [How would you rate your satisfaction?]**



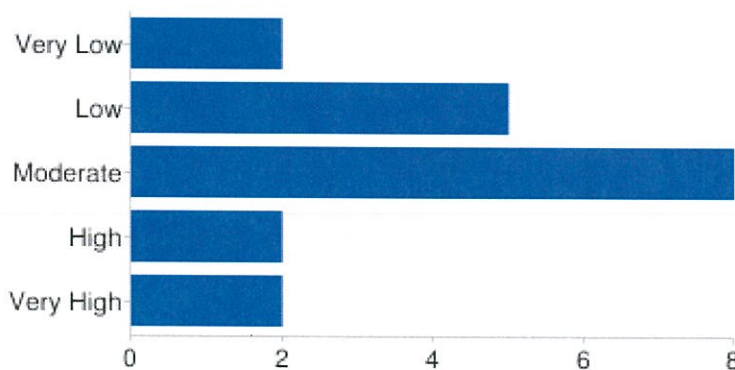
Very Low	0	0%
Low	0	0%
Moderate	0	0%
High	5	26.3%
Very High	14	73.7%

**Was the information easy to understand?**

Yes **18** 100%  
 No **0** 0%

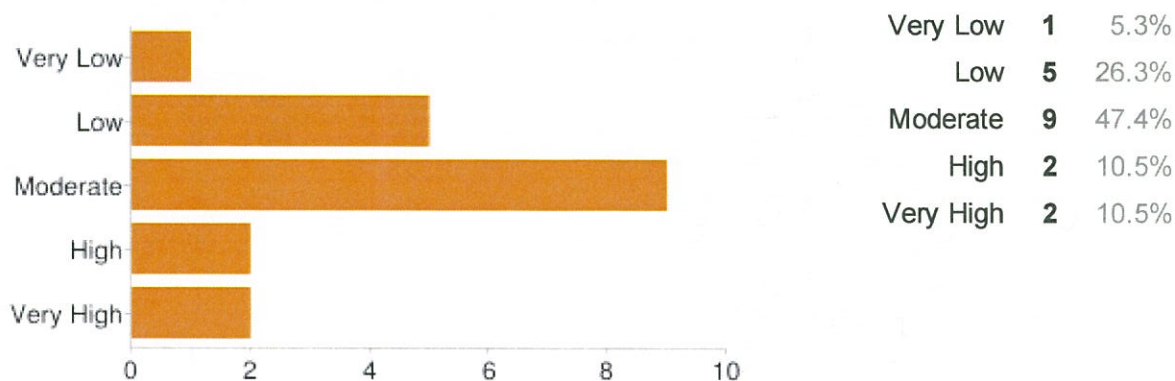
**Identifying your customer, target market [How do you rate your knowledge BEFORE farm school on the subjects we covered?]**

Very Low **1** 5.3%  
 Low **6** 31.6%  
 Moderate **7** 36.8%  
 High **3** 15.8%  
 Very High **2** 10.5%

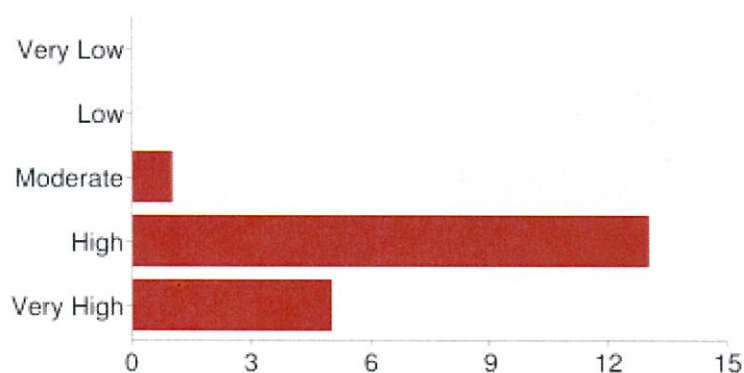
**Understanding market share [How do you rate your knowledge BEFORE farm school on the subjects we covered?]**

Very Low **2** 10.5%  
 Low **5** 26.3%  
 Moderate **8** 42.1%  
 High **2** 10.5%  
 Very High **2** 10.5%

**Setting your market price [How do you rate your knowledge BEFORE farm school on the subjects we covered?]**

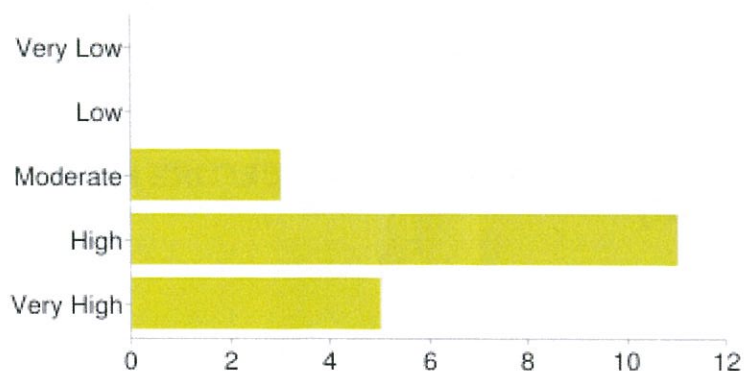


**Identifying your customer, target market [How do you rate your knowledge AFTER farm school on the subjects we covered?]**



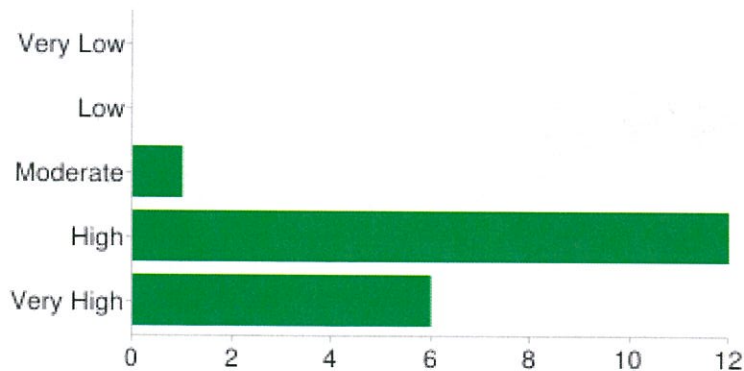
Very Low	0	0%
Low	0	0%
Moderate	1	5.3%
High	13	68.4%
Very High	5	26.3%

**Understanding market share [How do you rate your knowledge AFTER farm school on the subjects we covered?]**



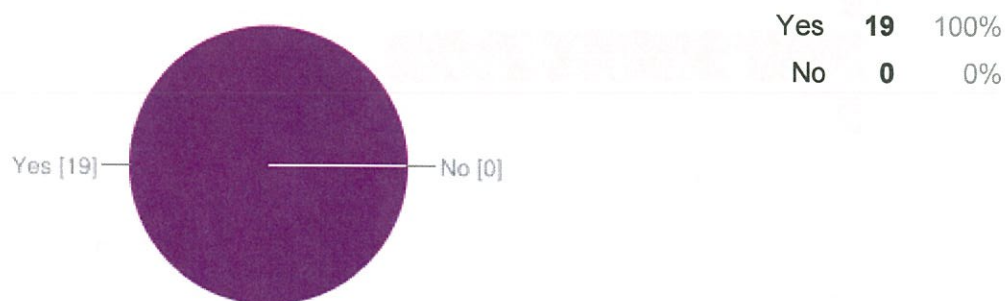
Very Low	0	0%
Low	0	0%
Moderate	3	15.8%
High	11	57.9%
Very High	5	26.3%

### Setting your market price [How do you rate your knowledge AFTER farm school on the subjects we covered?]



Very Low	0	0%
Low	0	0%
Moderate	1	5.3%
High	12	63.2%
Very High	6	31.6%

### Did this session meet your expectations?



### How can we improve this business session?

Invite a guest farmer who is using a marketing plan to promote their business.  
 help us to identify our market and show the best ways to target our customers  
 More real production, pricing, input, machinery, and product sale pricing and contact  
 numbers for info and supplies. Instructors are very competent and knowledgeable, and



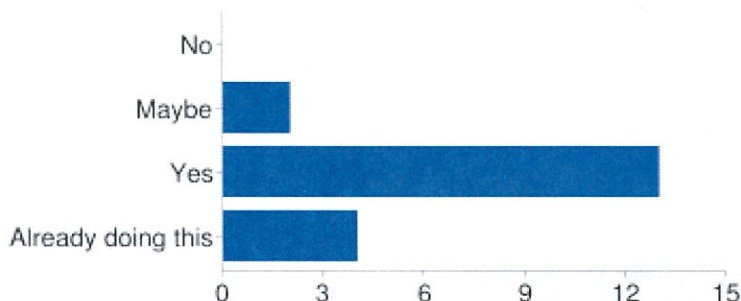
care about students success.

Can't think of but one little idea and that is using more farm related ideas?

Danelle is Great! Everything is covered very well.

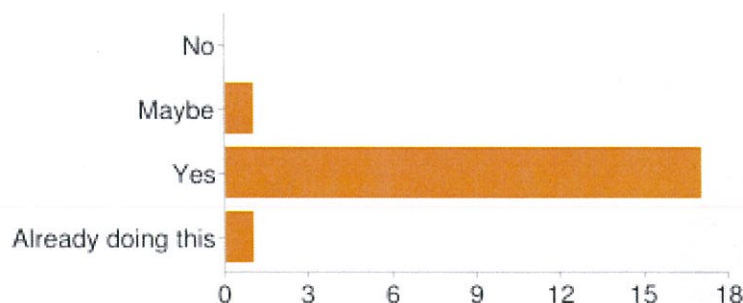
I like getting printouts of the powerpoints. Old fashioned? Yes. It just works for me.

**Set your product price? [Please choose the response that describes your ability to plan your Farm Financial Statements.]**



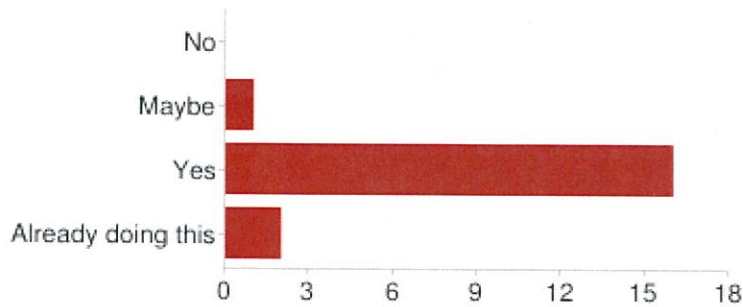
No	0	0%
Maybe	2	10.5%
Yes	13	68.4%
Already doing this	4	21.1%

**Estimate your market share? [Please choose the response that describes your ability to plan your Farm Financial Statements.]**



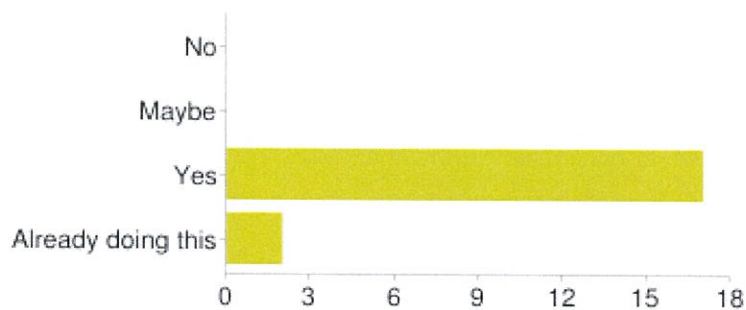
No	0	0%
Maybe	1	5.3%
Yes	17	89.5%
Already doing this	1	5.3%

**Identify your customer/target market? [Please choose the response that describes your ability to plan your Farm Financial Statements.]**



No	0	0%
Maybe	1	5.3%
Yes	16	84.2%
Already doing this	2	10.5%

**Evaluate your competition? [Please choose the response that describes your ability to plan your Farm Financial Statements.]**



No	0	0%
Maybe	0	0%
Yes	17	89.5%
Already doing this	2	10.5%

## Number of daily responses

